

Competition Rule Q: British Schools Orienteering Championships

These Rules must be read in conjunction with the British Orienteering Rules of Orienteering. Where these Rules vary or supplement British Orienteering Rules of Orienteering, then these Competition Rules will take precedence.

1. General information

1.1 Purpose

- 1.1.1 The British Schools Orienteering Championships (BSOC) is a team competition for pupils from a wide range of ages and abilities.
- 1.1.2 It is supported by the British Schools Orienteering Association (BSOA), whose objective is to boost participation in orienteering in as many British schools as possible.

1.2 Format

- 1.2.1 The BSOC is an annual competition aimed at school teams comprised of junior orienteers of all standards. It aims to reward performance in school's orienteering by providing a good level of competition.
- 1.2.2 The British Schools Championships usually takes place during November avoiding Remembrance Sunday.

1.3 Administration and finance

- 1.3.1 The BSOC must be registered as a level B event. Levy is due at the British Orienteering junior rate.
- 1.3.2 The date and location of the event is determined by Event Scheduling Group. It will rotate round the British Isles on a regional basis.
- 1.3.3 The entry cost is to be kept as low as possible whilst still maintaining the quality of the event.

1.4 Responsibility for the event

- 1.4.1 The British Schools Orienteering Championships are organised by constituent Associations or by clubs (known as The Organising Body) on behalf of British Orienteering. The event is overseen by British Orienteering.
- 1.4.2 The Organising Body must take financial responsibility.
- 1.4.3 Applications to request variation to the Competition Rules must be made to Events and Competitions Committee.

Competition Rule Q: British Schools Orienteering Championships

1.4.4 Individual clubs may offer to host the championships.

2. Eligibility

2.1.1 Any School may enter a team in the British Schools Championships

2.1.2 School categories

Primary:	Years 5 and 6
Middle/Prep:	Years 5 to 8
Large Secondary	Years 7 upward (601 or more on roll)
Small Secondary:	Years 7 upward (up to 600)
Tertiary, 6 th Form Colleges and Colleges of F.E	

2.1.3 No competitor is permitted to take part who is older than 18 by the 31st August of the academic year of the competition.

2.1.4 All competitors must attend the school / college for which they are competing.

2.1.5 Home educated children are permitted to compete with the proviso that their entry form is signed by an authorized member of the education authority who can confirm the child/children are on their 'roll'.

2.1.6 The competition is for school years 5 to 13. All children entered should be able to read an orienteering map competently and be confident in using basic navigation techniques.

2.1.7 Boys and girls compete in separate classes.

2.1.8 They should have competed in three events of an appropriate standard before BSOC. Younger competitors are permitted to take part at the discretion of the school if they are technically capable of completing a White course.

2.1.9 Pairs are permitted to compete in years 5 to 8. (indicated by * in the course table in 3.2).

- They should stay together and cross the finishing line together.
- If a pair contains two different age categories then they compete in the older age category
- If a pair contains a boy and a girl then they compete in the Boys category in the age class of the oldest of the pair

2.1.10 If any child with additional needs wishes to compete in the BSOC, a signed written statement from a senior member of staff at the pupils school should be sent to the organiser as soon as possible detailing any extra special arrangements the school would like considered to enable the child to take part within the existing framework

Competition Rule Q: British Schools Orienteering Championships

of the event. The organiser in consultation with British Orienteering will consider appropriate arrangements to enable the child to take part. The health and safety issues and the interests of all participants must be considered.

2.2 Shadowing

- 2.2.1 Shadowing of competitors is not permitted.

2.3 Embargo of the competition area

- 2.3.1 All parts of the competition area are out of bounds to all members of school teams entering the event, as well as staff and parents. This will apply up to the date of the competition from 12 calendar months before, or from the date on which the venue is published (whichever is shorter).
- 2.3.2 Infringement of this or other rules of the competition will render any team concerned liable for disqualification.

2.4 Entries

- 2.4.1 Entries are by National Curriculum years as an example class G7 means girls from National Curriculum Year Seven (those having their 12th birthday between 1st September and 31st August during the school year in which the competition is held.)
- 2.4.2 All entries must be made via the school and require a head teacher's or governor's signature on the entry form.
- 2.4.3 The name and contact details of the member of staff or responsible adult who will be supervising the children from the school in question on the weekend of the competition and acting as a contact before and after the event must be given on the entry form. They are expected to be responsible for their team members before, during and after the event and to help with any emergencies involving their children. Teacher's and/or adults in charge of a school team are not permitted to enter the competition area (anywhere between the start and finish) whilst the courses are open without leave from the organiser of the event.
- 2.4.4 Schools are permitted to enter up to 6 competitive entrants per age class. In the appropriate age class each entrant may be a pair of competitors. (Any extras will be accepted subject to availability of start times and must be declared non-competitive when entering).
- 2.4.5 Entrants are permitted to run up one but not more than one age class.

Competition Rule Q: British Schools Orienteering Championships

3. Safety

- 3.1.1 This event has very specific and different safety risks, because of the relative inexperience and young age of the competitors and should conform to British Orienteering 'O' Safe and Good Practice guidelines.
- 3.1.2 A Safety officer must appointed for the whole weekend. Issues that he/she will need to be responsible for, or otherwise consider, include the following:
- provision of adequate first aid support
 - consideration of the time courses close compared with nightfall (mainly on the Saturday)
 - the preparation of, and if necessary implementation of, a search plan to locate missing competitors
 - the provision of "ask me" helpers in the area, to assist competitors. Such adults must be readily identified by competitors, so that there is no risk of them engaging with members of the public. It is also a British Orienteering requirement that such helpers be CRB checked.

3.2 Photographs

- 3.2.1 Written permission must be obtained from the schools to take photographs of competitors that may be used on BSOA/ British Orienteering /Club web sites - follow British Orienteering guidelines.

4. Officials

- 4.1.1 The officials for the event must meet the requirements set out for a level B event in the British Orienteering Rules, Appendix C: Event officials. In particular a minimum of a grade B controller with experience of junior competitions.
- 4.1.2 The British School Championships requires a Planner who is experienced at planning good junior courses.

5. Organisation

5.1 Entries and information

- 5.1.1 Flyers must be produced as early as possible to advertise the event. Publicity should be sent to all junior publications.
- 5.1.2 Entry forms must be produced in electronic and hard copy format and should be published on the BSOA web site, with links from the British Orienteering and organising club web sites.

Competition Rule Q: British Schools Orienteering Championships

- 5.1.3 There must be no entries on the day, a fixed closing date should be given, and late entries taken at the organising club's discretion. Entries should come via the school only. Relevant numbers of start times per year groups should be posted to schools with final details.
- 5.1.4 A copy of the map of the area (not just an extract) must be sent to the schools entering so that they are familiar with the type of terrain before they come to the event. This can either be an old one (with advice that it is being updated), or a copy of the new map.

5.2 Location, parking and assembly area requirements

- 5.2.1 If possible the event should be close to major road networks.
- 5.2.2 Parking should be as near to the assembly area as possible so that competitors can easily move backwards and forwards without danger. Ideally coaches and mini busses should also be accommodated in the same area or very near to it.
- 5.2.3 The assembly area must be designed to give a good run in from the final control and to make the event feel 'special'.

5.3 Start

- 5.3.1 It is useful if the start(s) are close to the assembly area, although the start area itself should not be accessible to teachers, parents, etc. It is likely that the event will require more than one start to cater for the different courses.

5.4 Start times

- 5.4.1 The start period must be set so that the final start time is at 12.30 p.m.
- 5.4.2 Start times must be at 1 minute intervals.
- 5.4.3 Competitors should be spread throughout the start period so that a similar number start at each minute interval.
- 5.4.4 Only one competitor from an age group must start at any one start time.
- 5.4.5 The minimum time gap between competitors from the same school on the same course must be 4 mins for yrs 5-8 and 8 mins for yrs 9-13.
- 5.4.6 Course closing time must be in the final details and on the description sheets. Competitors must be advised that they should retire if they are still out on their course after 2 hours.

Competition Rule Q: British Schools Orienteering Championships

- 5.4.7 Start times must be published on the BSOA website giving only the School's name and start times. No children's names must be published for start lists.

5.5 Finish

- 5.5.1 Maps must be collected at the finish and handed back after the last start time.

5.6 Electronic punching

- 5.6.1 Electronic punching must be used, either SI or EMIT. One e-card per individual or pair.
- 5.6.2 If using Electronic controls a back-up punch must be provided on the controls and appropriate punch boxes on the map.

5.7 Training day

- 5.7.1 This must be staged on the Saturday before the championships. The format of this is flexible, however ideally it should use the same type of electronic punching and be on similar terrain to the Championships.

5.8 Overnight accommodation

- 5.8.1 Overnight accommodation of the school floor type should be made available locally for schools travelling long distances. Separate classroom per school are preferable to a sport hall, the younger ones can then go to bed earlier.
- 5.8.2 A simple breakfast is required and recommendations of local opportunities for an evening meal.
- 5.8.3 Each school must have enough adult supervision such that if they bring both male and female pupils they are accompanied by both male and female members of staff.
- 5.8.4 The children must be supervised at all times by their own staff. Lights out will be between 10 p.m. until 7.00 a.m. Silence must be maintained between these hours.

6. Map and Terrain

- 6.1.1 The map scale for the event must be 1:10,000.
- 6.1.2 There must be one map for each runner (including both members of each pair).
- 6.1.3 Control descriptions must be given in words for all courses and must include any basic safety instructions.

Competition Rule Q: British Schools Orienteering Championships

6.2 Terrain

- 6.2.1 The area must be suitable for juniors, either forest or parkland/forest with a good track and path network. Open fell or moorland areas are not suitable for this event.

7. Course planning

- 7.1.1 Age class technical standards and target winning times.

(White = TD 1; Yellow = TD2; Orange = TD3; Light Green = TD4; Green = TD5)

Class	Target Technical Level	Target Winning Time min	Class	Target Technical Level	Target Winning Time min
G5*	White	10 - 12	B5*	White	10 - 12
G6*	White	12 - 14	B6*	White	12 - 14
G7*	Yellow	14 - 16	B7*	Yellow	14 - 16
G8*	Yellow	16 - 18	B8*	Yellow	16 - 18
G9	Orange	18 - 22	B9	Orange	18 - 22
G10	Orange	22 - 26	B10	Orange	22 - 26
G11	Light Green	26 - 30	B11	LightGreen	26 - 30
G12	Light Green	30 - 35	B12	Light Green	30 - 35
G13	Green	35 - 40	B13	Green	35 - 40

- 7.1.2 No courses other than those for the competitors should be provided on the Sunday. Only authorized adults are permitted in the area.

- 7.1.3 Courses should be planned according to the above table and Appendix B. No further adjustments to the technical difficulty need to be made just because this is a School's Championships. This has already been allowed for in the table. However planners must remember that the competitors on these courses are amongst the best in the country, and take into account their running speeds when calculating the appropriate course length for each class.

8. Prize giving and trophies

8.1 Individual awards

- 8.1.1 Awards, preferably medals and a certificate, must be given to the first three competitors (or pairs as appropriate) in each of the 9 boys' and 9 girls' age classes.

- 8.1.2 Each competitor should receive a certificate and if possible some form of memento.

Competition Rule Q: British Schools Orienteering Championships

8.2 Team awards

- 8.2.1 Teams Awards, preferably medals and a certificate, must be given to the first three teams in each of the 9 boys' and 9 girls' age categories.
- 8.2.2 Scoring is by position in results. The lowest total producing the winner in each category.
- 8.2.3 Where teams have the same number of points the position of last scorer will determine precedence.

8.3 School trophies

Primary (Years 5 & 6 boys and/or girls)	Best 4 scores to count.
Middle / Prep (Years 5-8)	Best 4 scores to count with at least 1 from Yr 5/6 and 1 from Yr 6/7
Large Secondary (Years 7-13)	Best 9 scores to count from at least 3 years
Small Secondary (Years 7-13)	Best 6 scores to count from at least 3 years
Tertiary (Year 12 or older)	Best 3 scores to count

- 8.3.1 Incomplete teams will be ranked for results or awards purposes behind all complete teams.

8.4 Prize giving

- 8.4.1 Juniors appreciate a ceremony. A podium or raised ground is advisable. The area should be fenced off.
- 8.4.2 A PA system should be used.
- 8.4.3 If possible a local dignitary and/or young British elite athlete should be asked to present the prizes.
- 8.4.4 The BSOA will provide medals.

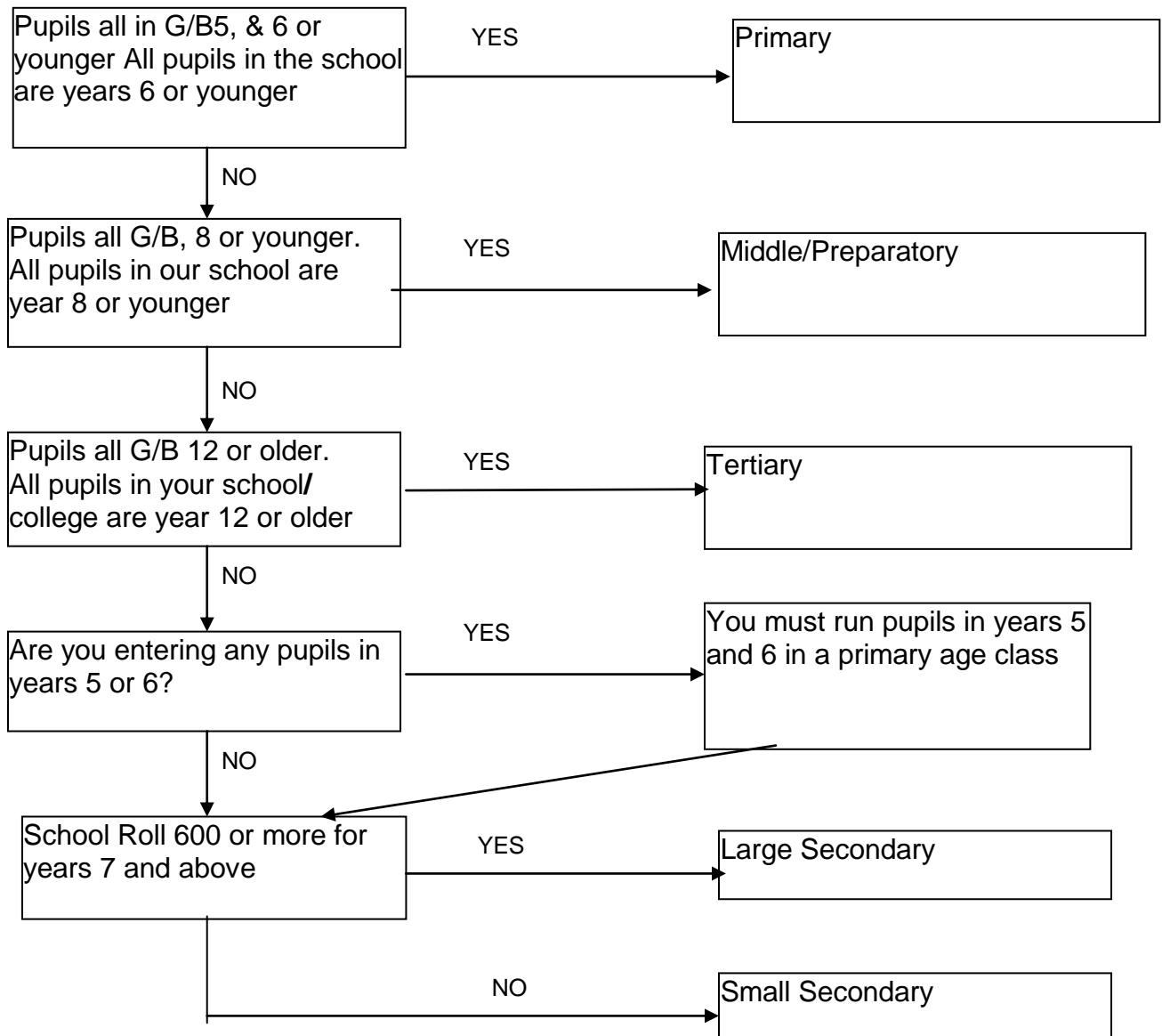
Competition Rule Q: British Schools Orienteering Championships

Appendix 1- School definition

A school is defined as an institution under one Head teacher and one Governing body with one admissions register on which all names of their entrants appear.

The following chart refers to pupils in the school, not just those entered for the event.

Schools should enter the “Whole School Team” as follows:



- Where a School or College does not conform to the guide above, then the school should enter the “Whole School Team” competition in a category appropriate to the

Competition Rule Q: British Schools Orienteering Championships

general classification of the school, and in the spirit of the competition.

- In the event of any uncertainty as to which “Whole School Team” category to enter, please contact the Organiser, who will attempt to resolve the matter.
- If a school and the organiser cannot agree on the correct category to enter, then the matter will be referred to Junior Competitions group whose decision is final.
- NB A school may only enter TWO “Whole School Team” Categories if they have pupils in years 5 or 6 AND years 9.